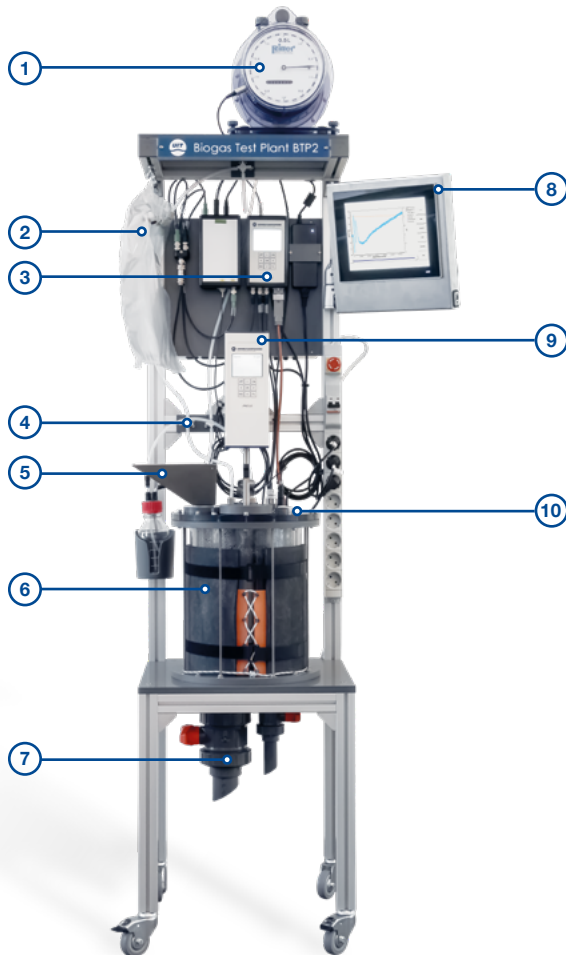




BTP2 ANAEROBIC LABORATORY DIGESTER



The biogas pilot plant BTP2 is the base system for substrate testing and gas potential tests and further research activities. This system is also ideally suited for product development (enzymes, nutrients) or for process optimization.

This system is characterized by an extensive basic equipment, e.g. SENSOcontrol or optional pumps for feeding (enzymes) or control of pH.

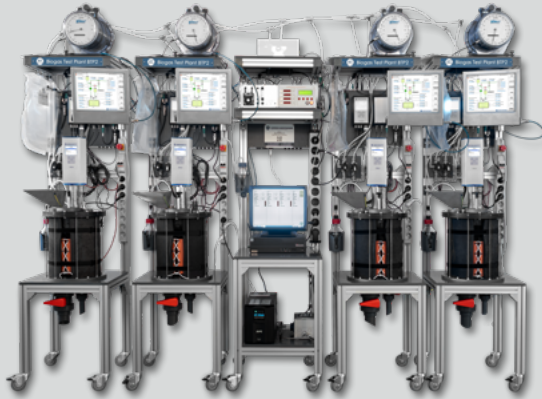
Components overview

- ① Drum gas meter with t-sensor
- ② Gas bag
- ③ T-controller for reactor temperature control
- ④ Hand valves
- ⑤ Feeding port
- ⑥ Reactor (different sizes) incl. mixer tool & heating
- ⑦ Discharge & sampling valve
- ⑧ SENSOcontrol data acquisition & control system
- ⑨ Agitator
- ⑩ pH and optional redox measurement

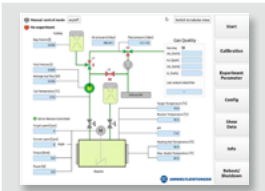
Reactor in different sizes - others on request
5 | 15 | 30 | 60 | 80 | 120 | 150 | 400 | 1,000 liters

Features | options

- ✓ Continuous operation with feeding
- ✓ Electrical heating
- ✓ Two level stirrer with gaslight shaft
- ✓ Optional dosage pumps for pH-control
- ✓ Gas bag to collect gas samples
- ✓ SENSOcontrol with touch panel
- ✓ Measurement equipment: gas quantity, pH, redox, temperature



BTP2 *ADDITIONAL EQUIPMENT*



SENSOcontrol

The universal automation system SENSOcontrol is used for data acquisition applications and control of units (pumps, mixer) of the test plant. A touch panel for intuitive operation is integrated for user-friendly parameter set-up and real time visualization of measured data.



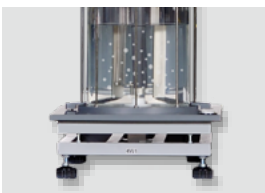
Tube Pump SP5 | Eccentric screw pump

The individual BTP modules can also be equipped with pump modules controlled by SENSOcontrol. Tube pumps are available for pH-control and liquid feeding. Eccentric screw pumps can be used for difficult feeding requirements.



LED lighting system

The individual reactor systems can be equipped with additional LED lighting strips. The following wavelengths can be offered: 670 nm red, 740 nm IR, 570 nm green, 480 nm blue, 2,700 K white. The light intensity can be adjusted.



Sparkling systems

The additional sparkling system with a mass flow controller allows the defined sparkling of gases. Gas mixing systems are also available.



Worldwide delivery

For additional information, individual consultation and prices, please contact us. We deliver our biogas test plants and the ordered additional equipment safely and on time to you worldwide.

The equipment features of the BTP will be defined by individual quotations.

Information on BTP2

