

BTP2 400 - 1000 LITERS



The BTP2 biogas test plant is an anaerobic digester. Its reactor sizes from 400 to 1000 liters are used for pilot tests. The reactors are made of stainless steel with silicone heating mats. The systems are equipped with advanced measurement technology (gas quantity, gas quality, pH, temperature).

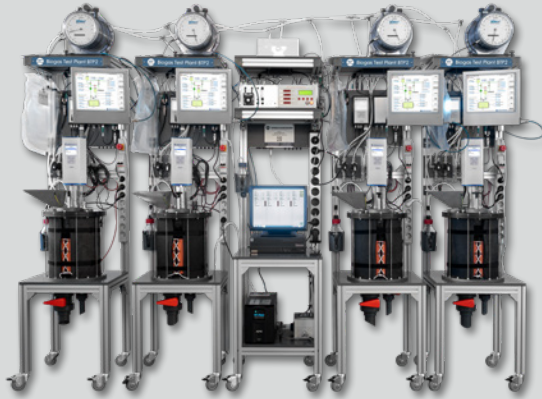
Industrial agitators with frequency converter are installed. The heating control system T-control is used and allows the target temperature in the reactor to be set automatically with high precision.

Components overview

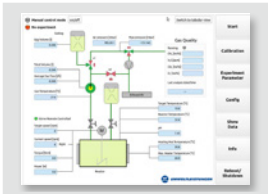
- ① Feeding funnel
- ② Agitator with frequency converter
- ③ SENSOflex data acquisition and control systems
- ④ Drum gas meter with t-sensor
- ⑤ Stainless steel reactor with heating and isolation
- ⑥ Tube pump
- ⑦ Central gas quality measurement system (CH₄ | CO₂ | H₂S | O₂ | H₂)
- ⑧ Gas bag

Features | options

- ✓ Continuous operation with feeding
- ✓ Electrical heating
- ✓ Two level stirrer with gastight shaft
- ✓ Optional dosage pumps for pH-control
- ✓ Gas bag to collect gas samples
- ✓ SENSOflex with touch panel
- ✓ Measurement equipment: gas quantity, pH, redox, temperature



BTP2 400 - 1000 LITERS *ADDITIONAL EQUIPMENT*



SENSOcontrol

The universal automation system SENSOcontrol is used for data acquisition applications and control of units (pumps, mixer) of the test plant. A touch panel for intuitive operation is integrated for user-friendly parameter set-up and real time visualization of measured data.



Tube Pump SP5

The individual BTP modules can also be equipped with pump modules controlled by SENSOcontrol. Tube pumps are available for pH-control and liquid feeding. The stepper motors enable highly accurate dosing.



Gas quality measurement system

Analyzer 1: CH₄ 0-100 vol% with IR sensor; CO₂ 0-100 vol% with IR sensor, O₂ 0-100 vol% with EC sensor, H₂S 0-5000 ppm with EC sensor

Analyzer 2: H₂ 0-20.000 ppm with EC sensor - protection system against excessive H₂ concentration; H₂ 0-100 vol% with thermal conductivity sensor



Eccentric screw pump

Eccentric screw pumps – complete with user panel and possible integration in SENSOcontrol:

- Eccentric screw pump / Frequency converter
- Temperature monitoring / tubing / rack



Worldwide delivery

For additional information, individual consultation and prices, please contact us. We deliver our biogas test plants and the ordered additional equipment safely and on time to you worldwide.

The equipment features will be defined by individual quotations.

© 2026 Umwelt- und Ingenieurtechnik GmbH Dresden
All rights reserved. | For informational purposes only. | Version 02.2026
Technical data is subject to change and not warranted for operational use.

Information on BTP2

