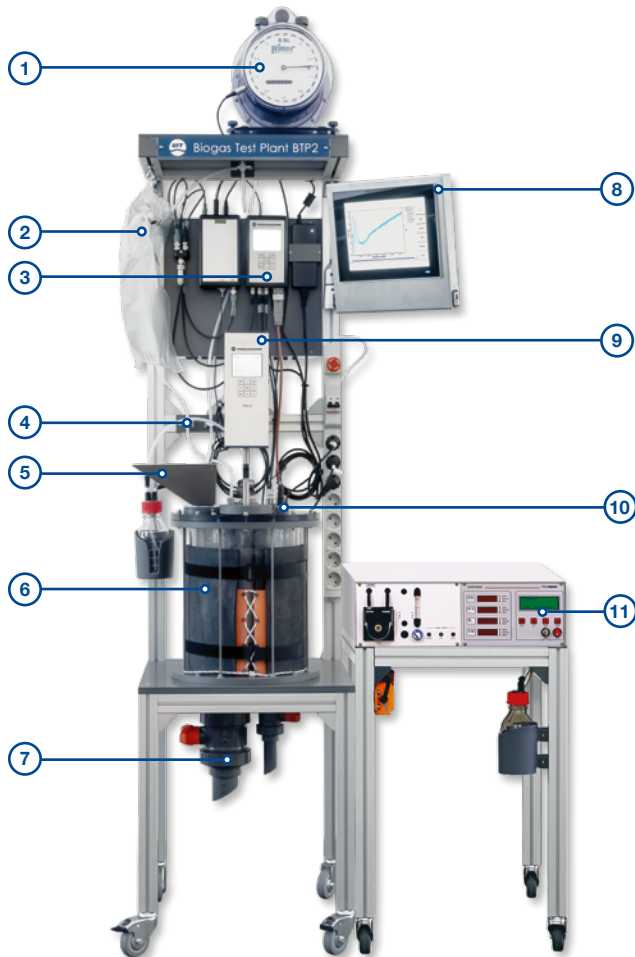




BTP2 ANALYZER



The BTP2 Analyzer biogas test plant is the solution for a highly equipped bioreactor, which is available in various reactor sizes (from 5 to 1000 liters).

In addition to the basic measurement technology of the BTP2, a gas analyzer (CH_4 ; CO_2 ; H_2S ; O_2 and optional H_2) is also integrated in this system. For the analysis, the produced gas is collected in a gas bag and the gas analysis is performed automatically when a sufficient amount of gas has been collected.

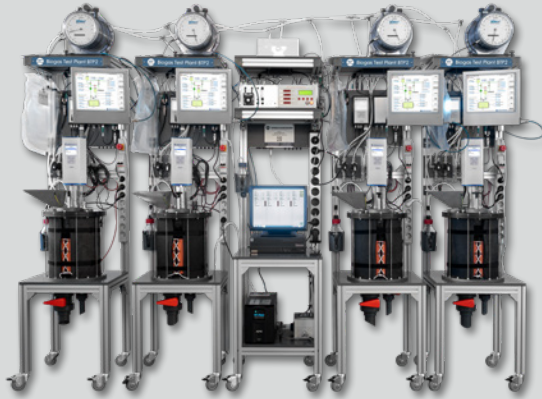
Components overview

- ① Drum gas meter with t-sensor
- ② Gas bag
- ③ T-controller for reactor temperature control
- ④ Magnetic valves
- ⑤ Feeding port
- ⑥ Reactor (different sizes) incl. mixer tool & heating
- ⑦ Discharge & sampling valve
- ⑧ SENSOcontrol data acquisition & control system
- ⑨ Agitator
- ⑩ pH & optional redox measurement
- ⑪ Automatic gas quality measurement

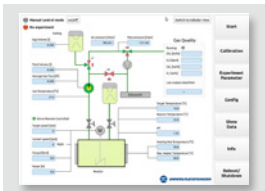
Reactor in different sizes - others on request
 5 | 15 | 30 | 60 | 80 | 120 | 150 | 400 | 1,000 liters

Features | options

- ✓ Continuous operation with feeding
- ✓ Electrical heating
- ✓ Two level stirrer with gastight shaft
- ✓ Automatic gas quality measurement
- ✓ Gas bag to collect gas samples
- ✓ SENSOcontrol with touch panel
- ✓ Measurement equipment: gas quantity, pH, redox, temperature



BTP2 ANALYZER *ADDITIONAL EQUIPMENT*



SENSOcontrol

The universal automation system SENSOcontrol is used for data acquisition applications and control of units (pumps, mixer) of the test plant. A touch panel for intuitive operation is integrated for user-friendly parameter set-up and real time visualization of measured data.



Tube Pump SP5

The individual BTP modules can also be equipped with pump modules controlled by SENSOcontrol. Tube pumps are available for pH-control and liquid feeding. Eccentric screw pumps can be used for difficult feeding requirements.



Gas quality measurement system

Analyzer 1: CH₄ 0-100 vol% with IR sensor; CO₂ 0-100 vol% with IR sensor; O₂ 0-100 vol% with EC sensor; H₂S 0-5000 ppm with EC sensor

Analyzer 2: H₂ 0-20000 ppm with EC sensor - protection system against excessive H₂ concentration; H₂ 0-100 vol% with thermal conductivity sensor



Sparkling systems

The additional sparkling system with a mass flow controller allows the defined sparkling of gases. Gas mixing systems are also available.



Scale systems

Scale systems are available for determining the weight and fill level (density of the substrate must be known) in the reactor. Three sensors are used.

The equipment features will be defined by individual quotations.

© 2026 Umwelt- und Ingenieurtechnik GmbH Dresden
 All rights reserved. | For informational purposes only. | Version 02.2026
 Technical data is subject to change and not warranted for operational use.

Information on BTP2 Analyzer

