

Advanced environmental monitoring networks

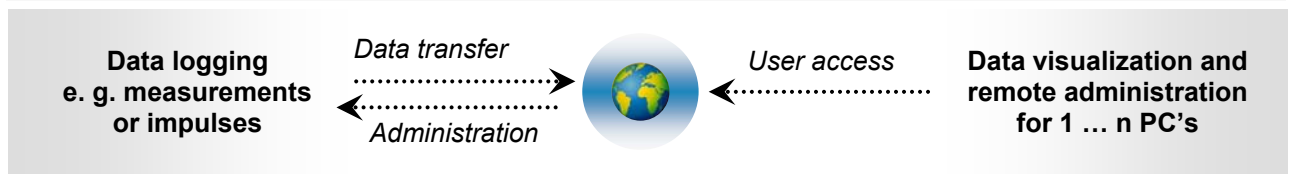
1st step: Web Server application „SENSOweb“

Innovative Web Server application „SENSOweb“



- Reliable operation of complex monitoring systems
- Customizable data visualization
- Alarm management of each measuring point
- Complete administration of measuring points
- Fully management and control of maintenance
- Totally remote administration of loggers and sensors
- Password protection and user administration
- Easily map integration of deployment sites

Your first step for a fully automated monitoring network

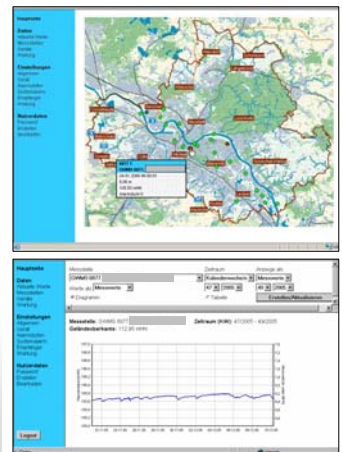


Web Server Internet database

Benutzername:

 Passwort:

**LOGIN with password protection
and defined user rights**



- User-defined and selectable visualization
- Customized graphical or tabular charts and statistics
- Representation of maximum, minimum and average
- Download and upload enabled
- Display current alarm status incl. map integrated charts
- Best scalability, easy integration and administration of sensors
- and further additional features ...

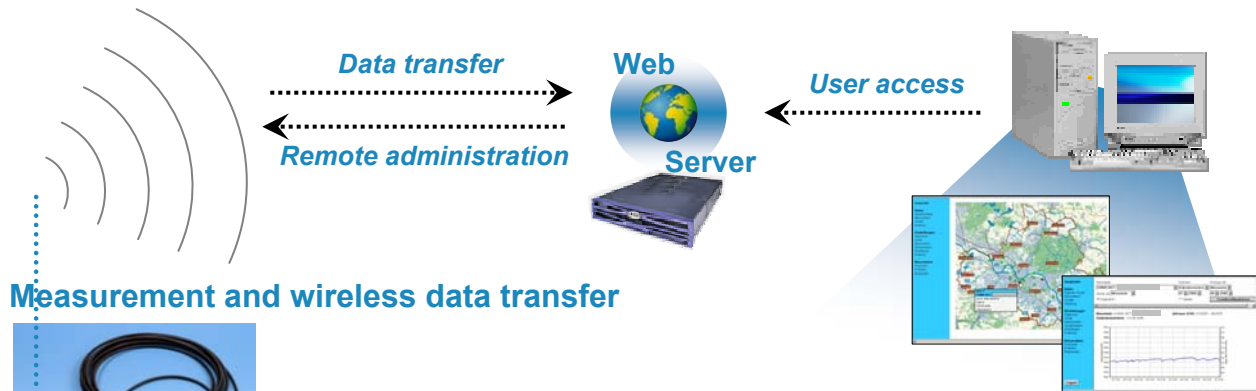
Additional Features



Advanced environmental monitoring networks

1st step: Web Server application „SENSOweb“

- **Reliable and solid measurement systems**
- **Digital data transfer with GPRS/GSM**
- **Integration of up to 500 measuring nodes in one system**
- **Defined and customized Alarming**



Measurement and wireless data transfer



WR-GPRS

- Water level monitoring for 4" ground water monitoring wells



WR-2z-GPRS

- Water level monitoring for 2" ground water monitoring wells



3KL-GPRS

- 3 channel data logger including wireless data transfer



OFW-GPRS

- Surface water measurement including wireless data transfer



Counter-GPRS

- Impulse data logging including wireless data transfer
- Combinable with precipitation gauge



Data transfer by using GPRS/ GSM

- ⇒ Integration of 1...500 measuring points/ locations
- ⇒ Customizable website accessible via any web enabled device and many

Alarm management

- ⇒ Real-time notifications:
 - ⇒ Low battery power
 - ⇒ Exceeding of defined threshold-values
 - ⇒ Displaying field strength
- ⇒ Alarm notifications via SMS, Fax

UIT-application „SENSOweb“

- ⇒ Web Server and data base enabled
- ⇒ Data visualization and storage
- ⇒ Defined rights and password protection
- ⇒ Remote administration of measurements
- ⇒ Integrated monitoring maps
- ⇒ Using UIT's shared Server or your own dedicated Server



UMWELTLEISTUNGEN

Umwelt- und Ingenieurtechnik GmbH Dresden
Postfach 80 01 40, 01101 Dresden, Deutschland
Zum Windkanal 21, 01109 Dresden, Deutschland

Phone: +49 351 88646-82
Fax: +49 351 8865774
E-Mail: sales@uit-gmbh.de
Internet: www.uit-gmbh.de