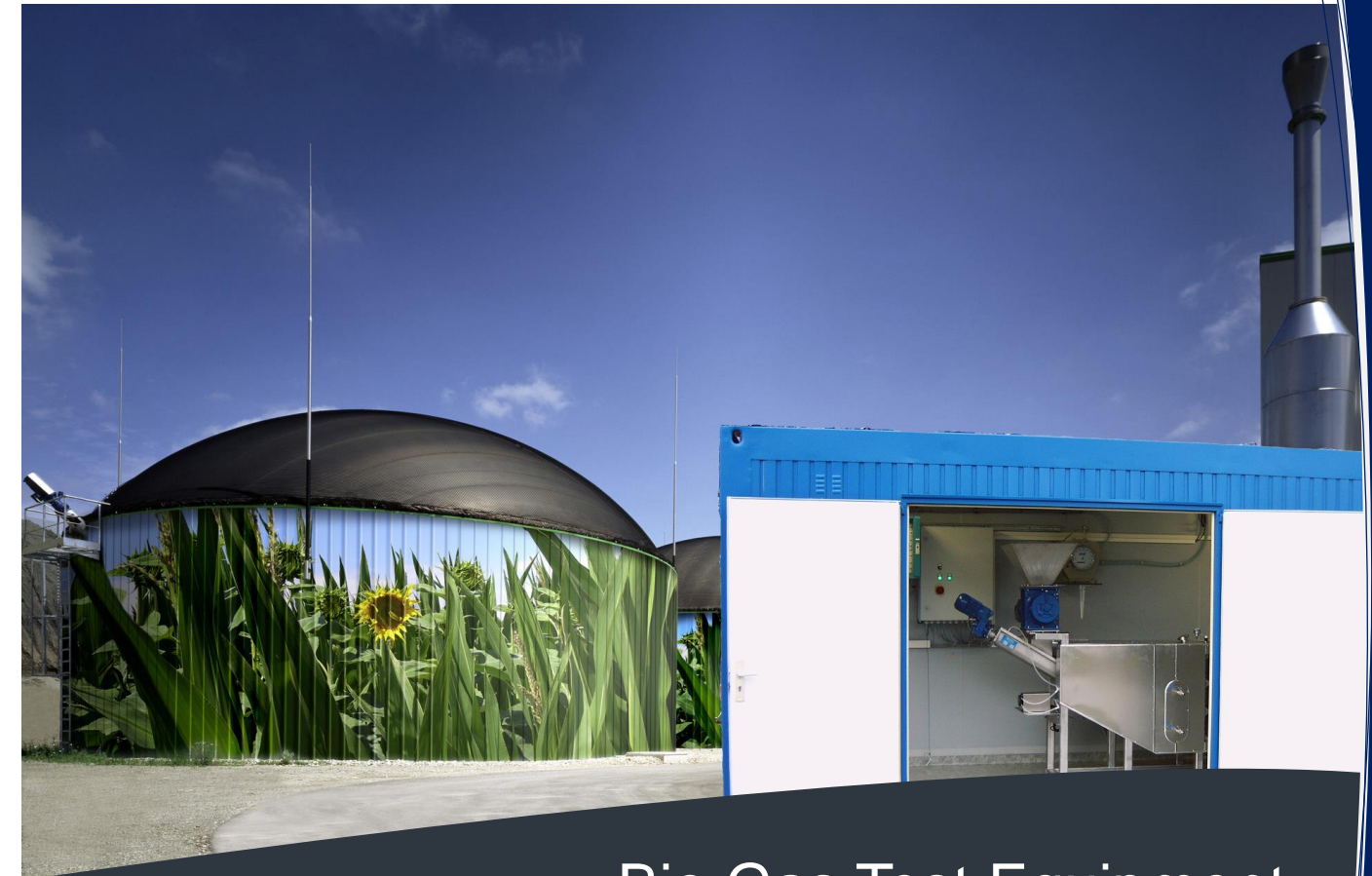


STANDARD AND
CUSTOMIZED TEST
EQUIPMENT FOR
VARIOUS APPLICATIONS

- Biotechnology
- Water Technology
- Waste Industry
- Remediation, Research
- Greenhouse Gas Monitoring
- Environmental Monitoring



Bio Gas Test Equipment

Container-based
pilot plants

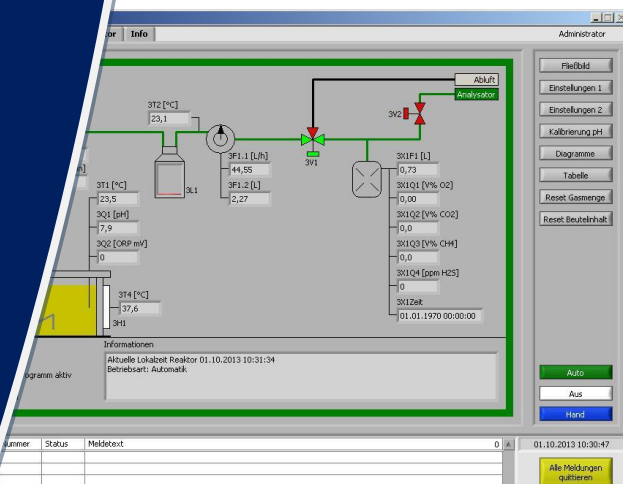


biogasCONTROL software solution

The main focus of our **biogasCONTROL** software is the storage of all reactor parameters including process control data, ensuring a smooth system operation. The software provides tools for download in the records stored by the logger and offers comprehensive options for data display.

A useful feature is our wireless **remoteDATA-LINK** option, providing remote access to the system. It allows data control and analysis from your desktop. An integrated modem transmits all data wireless to a server from where the operator receives event notifications, alarms etc.

- Controls and stores all reactor operation parameter
- Download of data
- remote DATA-LINK option to monitor



Innovative Bio Gas Test Equipment

WE HAVE WHAT IT TAKES FOR BIOGAS TESTING

Umwelt- und Ingenieurtechnik GmbH Dresden (UIT) is a German manufacturer and supplier of Biogas Test Equipment and various other monitoring equipment.

With the focus to provide high quality and reliable equipment we are helping to optimize processes for biogas plant operations and provide useful tools for biogas analysis as well as for research and development with the goal to optimize digester operation and maximize methane production.

As a classic Engineering Company with own production facilities we are in position to provide standard equipment, but also custom-made biogas testing systems that is specific to your technical requirements and within your budget and your timeline.

UIT Biogas Test Equipment is made in Dresden, Germany. We produce all systems according to highest level of quality and ship it to our customers worldwide.



Container-based Bio Gas Test Facilities for your benefit

Container-based test plant BTP 2C

The container-based test plant BTP 2C determines the potential biogas output of fermentation substrates in several modes. Depending on the design the test plant is mounted in a 20 ft. maritime container including **CSC approval**.

The bio reactor including **electrical heating** and **mixing** system is made of stainless steel in a cylindrical shape and provides a working volume of up to 2 m³.

Sensors for temperature control and measurement of pH as well as gas amount, mixer control (other parameters on request) provide important information to the **Central Data Acquisition and Control System**.

The reactor provides ports in different sizes to take all standard measurement electrodes.

A high quality **eccentric screw pump** connected to the storage vessel manages the feeding. An outlet for the digestate including a collecting tank is installed as well.

The **gas quantity** is measured through a high quality gas drum meter. **Gas quality parameters**, such as CH₄, H₂S, CO₂ and O₂ are also measured and recorded. Further a **gas detection and warning system** for CH₄, H₂ and H₂S is installed to monitor the container and control an **exhaust system** when needed.



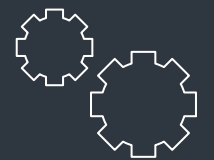
Our BTP 2C provides a tailored solution for experiments at pilot test-size scale, combined with the flexibility of a modular system, installed in a maritime container for portable operation.

The test plant contains a complex package of measurement instrumentation for the evaluation of the fermentation process and output.

- Biogas test plant mounted in a maritime container, including CSC approval
- Gas quantity and gas quality measurement
- Gas detection and warning system
- Measurement of reactor temperature and mixer parameters
- Central Data Acquisition and Control System
- High quality eccentric screw pump for feeding



We know that Maintenance Support is very important to our clients and therefore we are providing all services from remote diagnostics to onsite support and training.



In close cooperation with our clients we produce reliable equipment for a smooth operation in the long run.



Contact us, we will listen to your needs and work out a solution to fit your technical requirements, your budget and your timeline.

www.uit-gmbh.de